



Automatic Switch

For full automatic bilge pumping operation, connect the automatic switch to your bilge pump. This switch has a time-proven micro switch without mercury. When water exceeds the acceptable level, the pump is turned on by a rolling steel ball, which changes the pressure on the micro switch. Attaches to any Johnson Pump bilge pump through the clip on "T-slot" and can be used with 6, 12, 24 or 32 V systems.



ORDER NO.	PRICE
JHN 26014	\$24.14



Three Position Panel Switch

Compact panels give finger tip control of your pumps with a rugged, sealed weather proof rocker switch with red indicator light and a built in fuse holder. Switch and fuse holder are mounted on a corrosion resistant aluminum plate for a modern, clean looking panel. Three position- auto bilge pump on/auto/off dash switch. 12 volt.



ORDER NO.	PRICE
JHN 82044	\$40.99



Bilge Pump Switch with Circuit Breaker

Comes with a three way switch allowing both automatic and manual switching of the bilge pump. When operated in the manual mode, a red LED light is activated and when in the Automatic mode, a green LED light is activated. Includes a UL listed 20 amp circuit breaker.

ORDER NO.	DESCRIPTION	PRICE
SDG 4230401	2-3/16" X 3" Switch	\$23.95



Automatic Bilge Pump Switch

The Automatic Float Switch converts any Attwood or competitive-model bilge pump (10 amp or less) to fully automatic operation.

Product Features:

- Dependable, Long-Term Operation.
- Low-Profile Design.
- Quick Test Feature.
- Contains no Mercury.

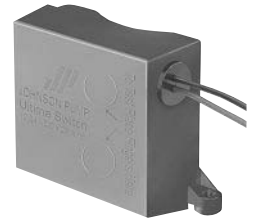


ORDER NO.	PRICE
ATT 42027	\$26.94



**Ultima Switch
The Ultimate
Automatic Bilge
Pump Switch**

- Totally sealed electronics
- No moving parts
- Not effected by oils or debris
- Completely corrosion proof
- "Mirus" field effect technology
- Activates at 2" fluid level
- De-activates at 3/4" fluid level
- No mercury
- No false starts
- 20 Amp maximum
- 12/24 volt
- Ignition Protected
- Meets and exceeds NMMA, ABYC, USCG, ISO 8846 and EMC 55014 requirements



ORDER NO.	PRICE
JHN 36303	\$55.34



Panel Switches

3-Way Panel Switch (Deluxe)

ORDER NO.	VOLTS	SIZE	PRICE
RUL 41	12V	3-1/4" x 2"	\$35.93



3-Way Panel Switch (Standard)

ORDER NO.	VOLTS	SIZE	PRICE
RUL 45	All	2-1/4" x 2"	\$26.59



3-Way Rocker Panel Switch (Deluxe)

ORDER NO.	PRICE
RUL 43	\$36.85



This unit has a built-in fuse holder and an internally lighted rocker switch with 3 positions (automatic, off, or manual) with the Rule "fail-safe" spring return to "off" from the "manual" position.



Personal Watercraft Pump On/Off Switch

Water resistant and designed to offer on-demand use of Rule Personal Watercraft Pumps. It features a compact design, a water resistant toggle mechanism and a marine stainless steel face plate.



ORDER NO.	PRICE
RUL 49PWC	\$24.71